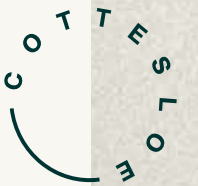


# MERIDIAN

PLANS





120 MARINE PARADE





With panoramic views over Cottesloe's waterfront and an undulating façade that echoes the shifting dunes and fluid tidal patterns of the nearby shoreline, Meridian ushers in a new era of location-defined architecture. An instant landmark, yet seamlessly at home in its environment.

Standing at the epicentre of Cottesloe's world-famous beachfront, Meridian's ten luxury residences and penthouse offer incomparable lifestyle amenity. Living spaces, alfresco areas and master bedrooms have been oriented to maximise both the vistas and opportunities for outdoor living. The use of natural materials such as stone is a direct response to the surrounding natural topography. The result? Homes that are deeply connected to their neighbourhood yet also peaceful places to relax and entertain.







## Building Plans

Residence 302  
Balcony  
Artist's Impression

# Basement 2

Key

Twin-Key

3 Bed x 2½ Bath

3 Bed x 3 Bath

3 Bed x 3½ Bath

4 Bed x 3½ Bath

Scale

0

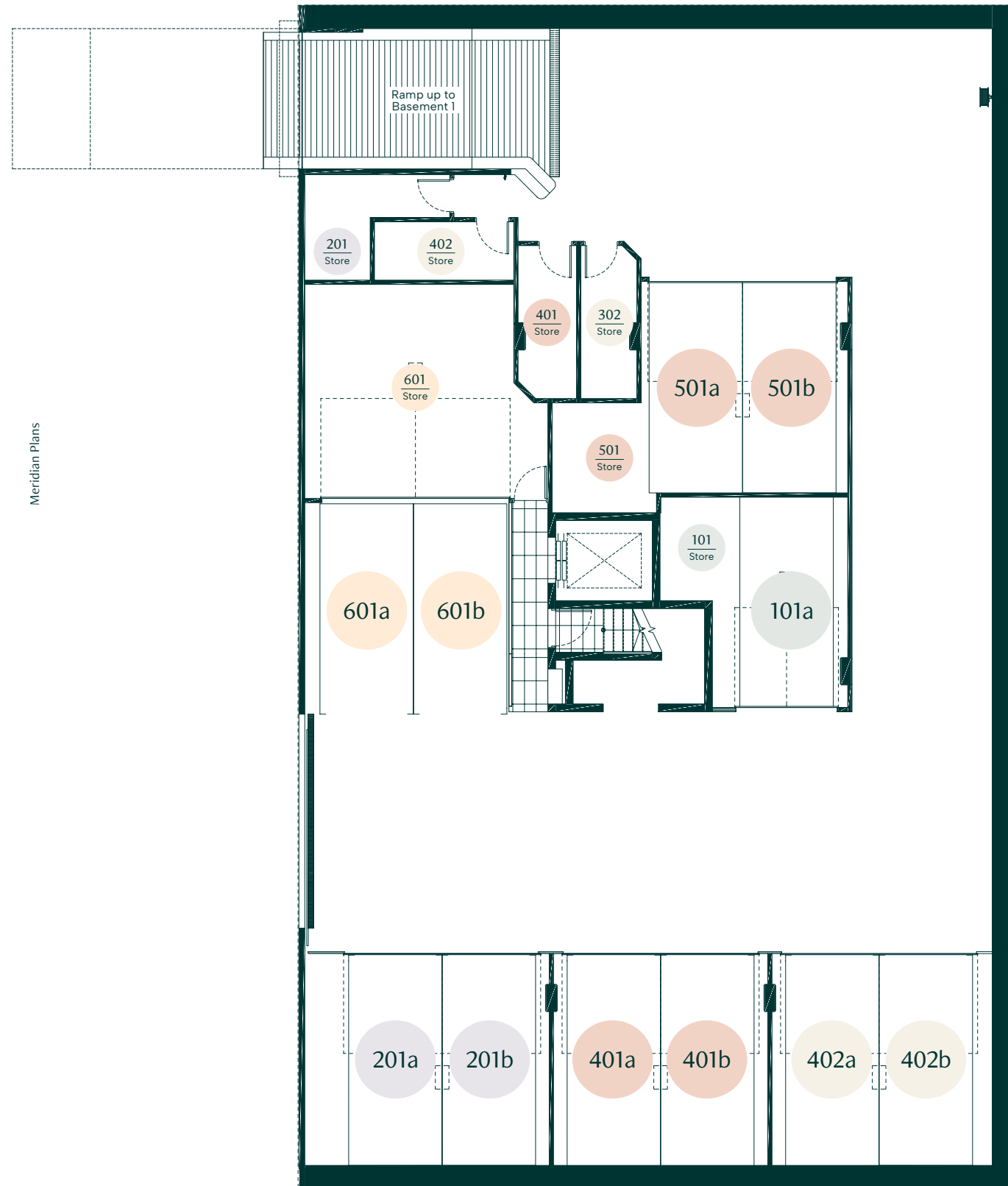
2m

4m

Level

Orientation

N



Key

Twin-Key

3 Bed x 2½ Bath

3 Bed x 3 Bath

3 Bed x 3½ Bath

4 Bed x 3½ Bath

Scale

0

2m

4m

Level

Orientation

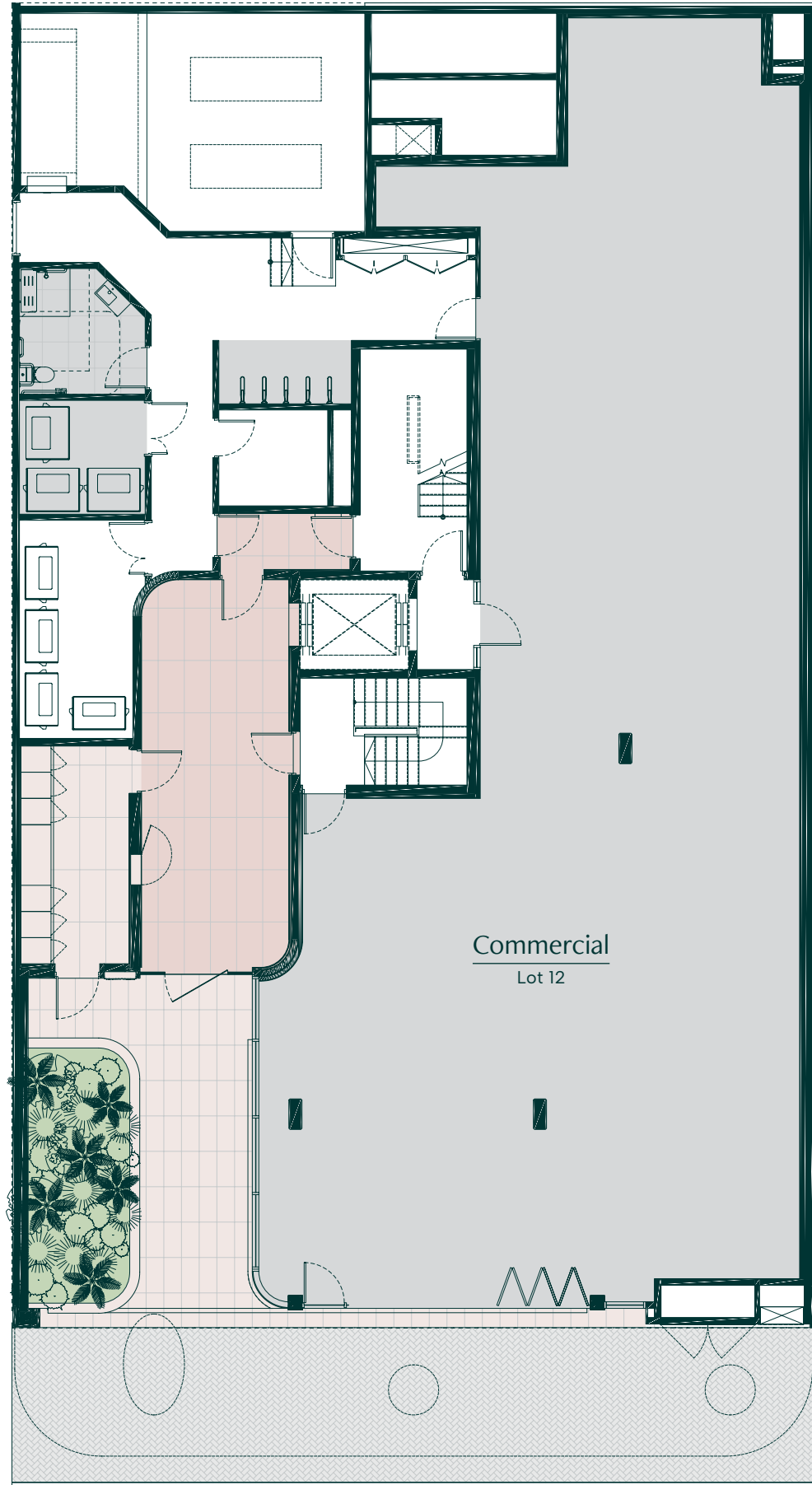
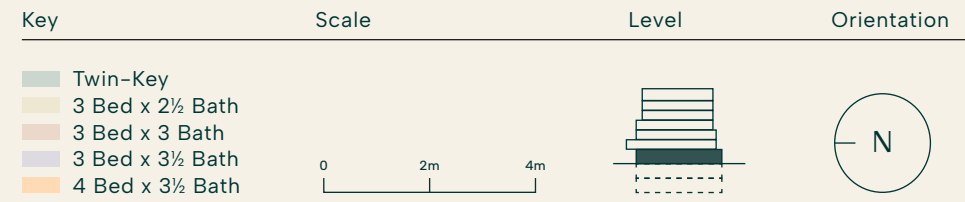
N

# Basement 1

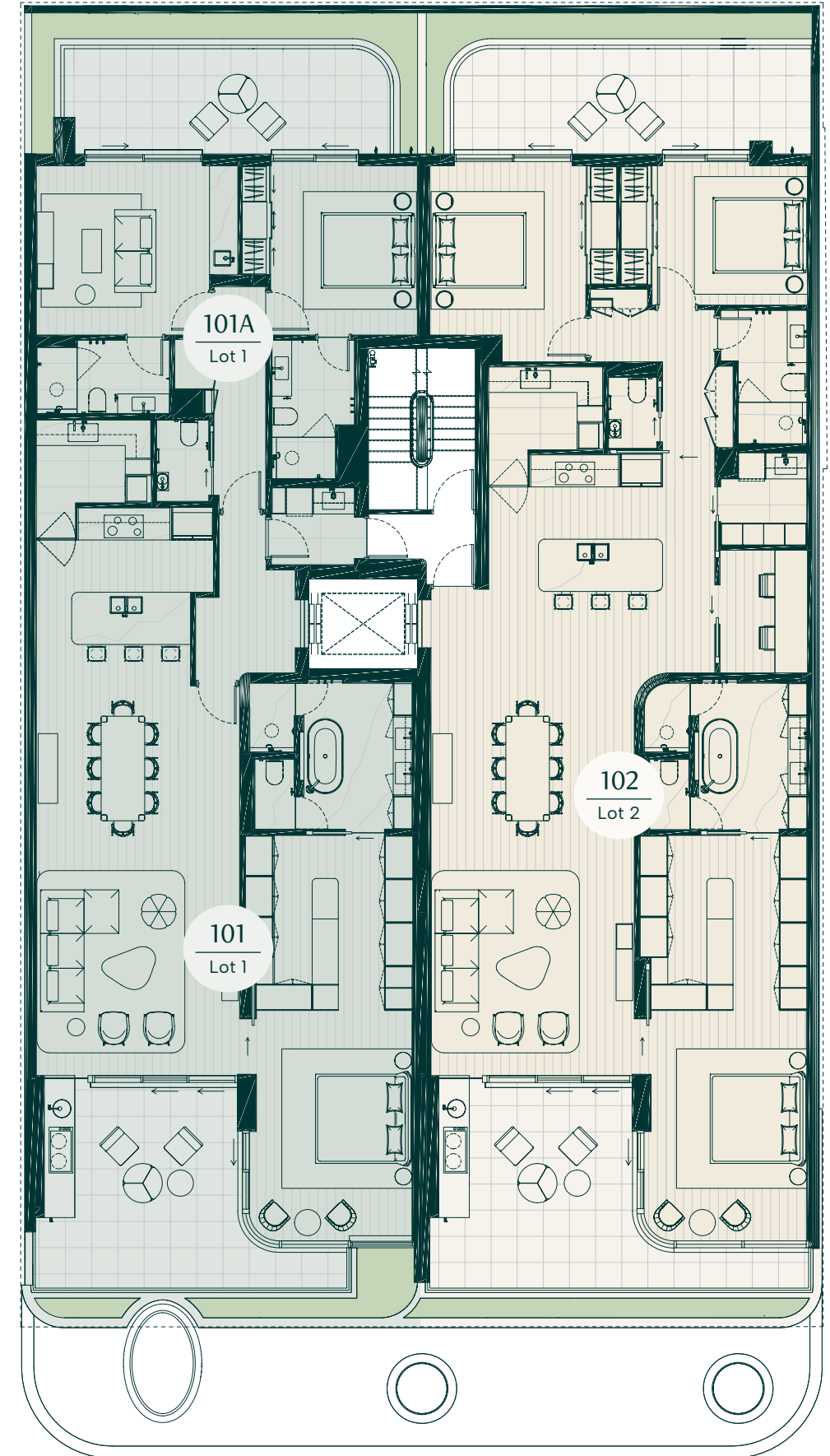
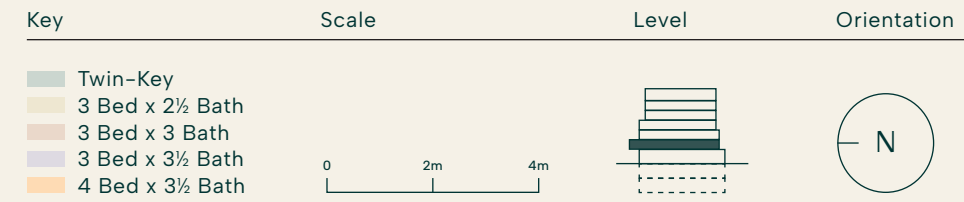




# Ground Floor



MARINE PDE



MARINE PDE

# First Floor

# Second Floor

Key

Twin-Key

3 Bed x 2½ Bath

3 Bed x 3 Bath

3 Bed x 3½ Bath

4 Bed x 3½ Bath

Scale

0

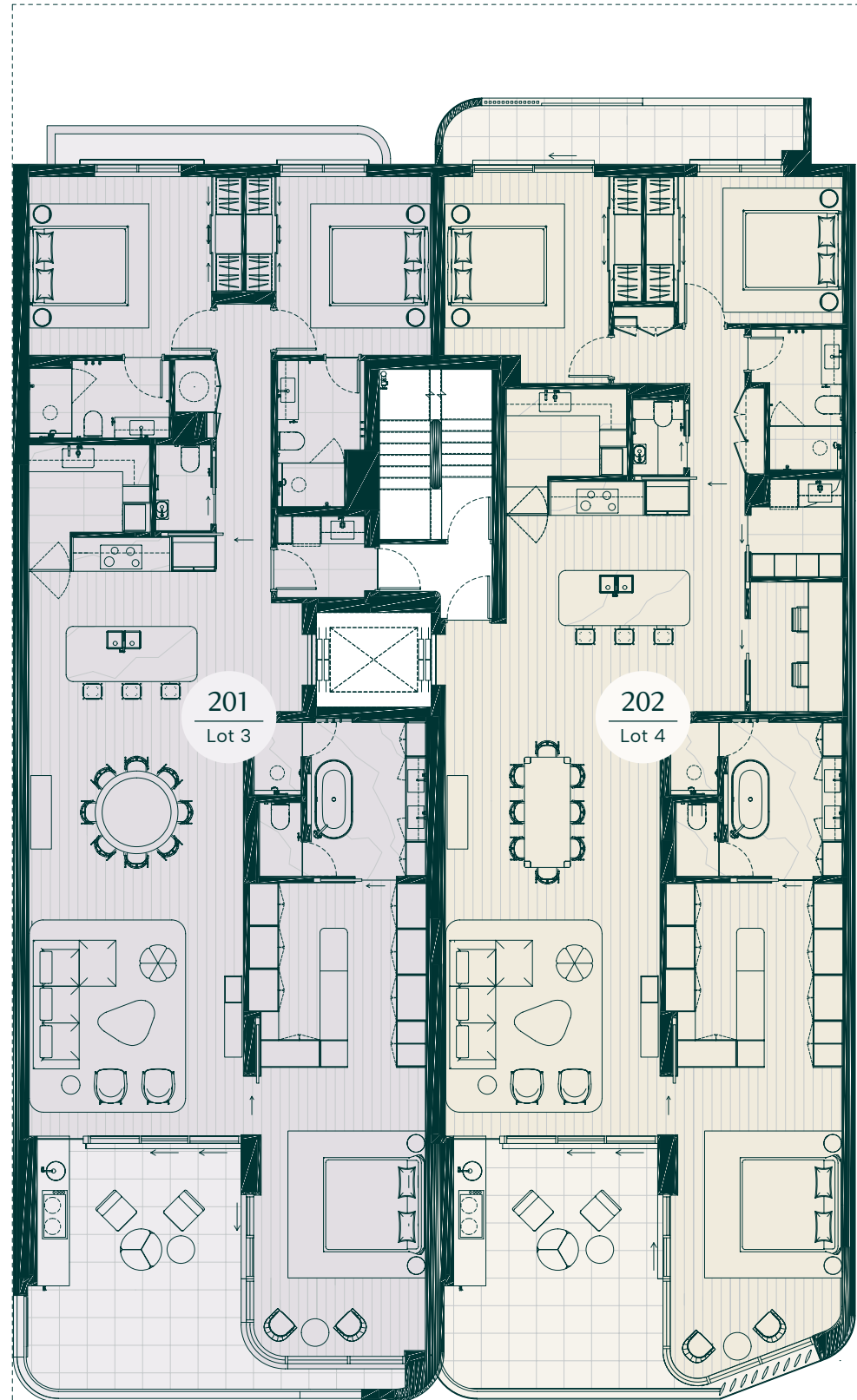
2m

4m

Level

Orientation

N



Key

Twin-Key

3 Bed x 2½ Bath

3 Bed x 3 Bath

3 Bed x 3½ Bath

4 Bed x 3½ Bath

Scale

0

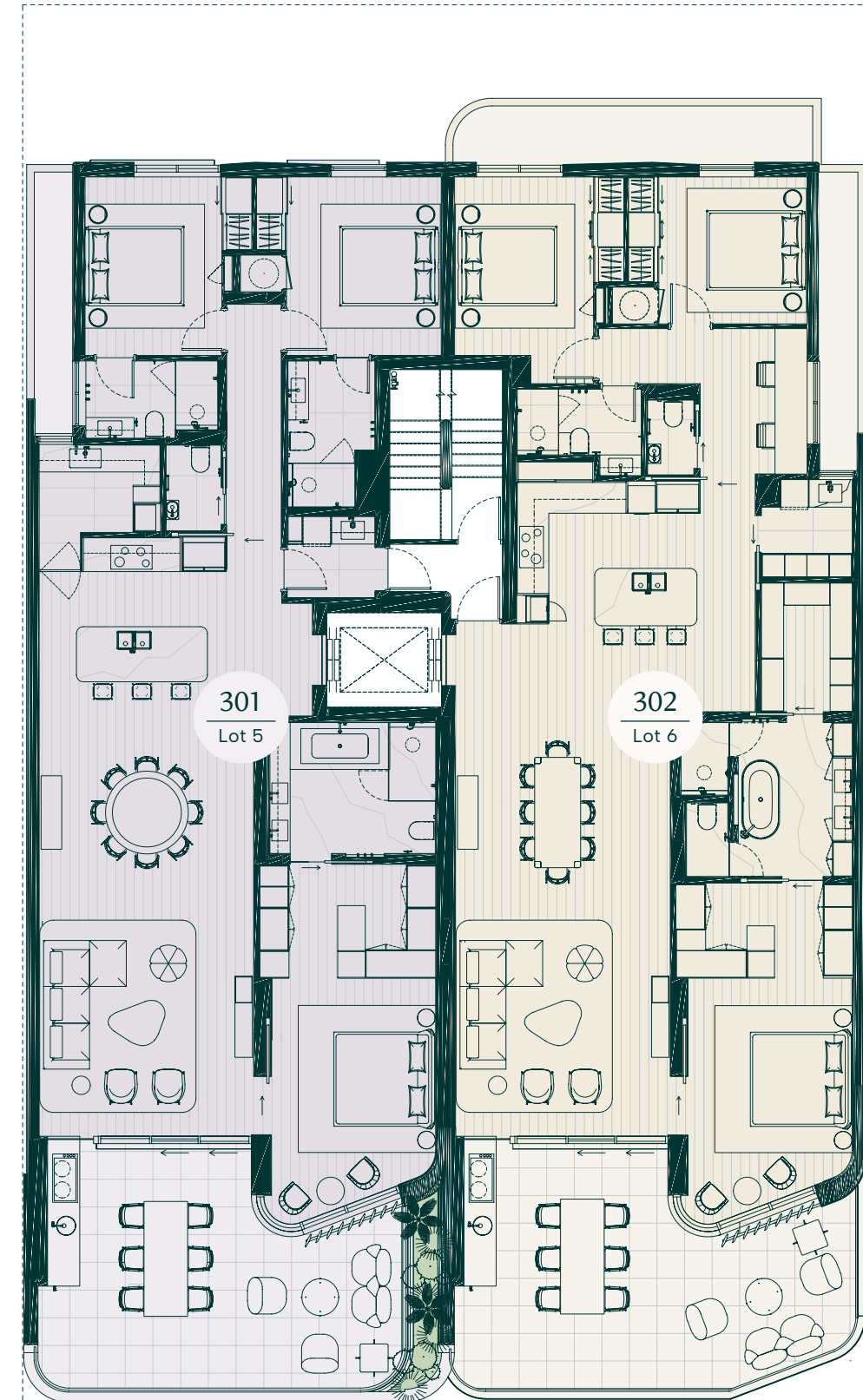
2m

4m

Level

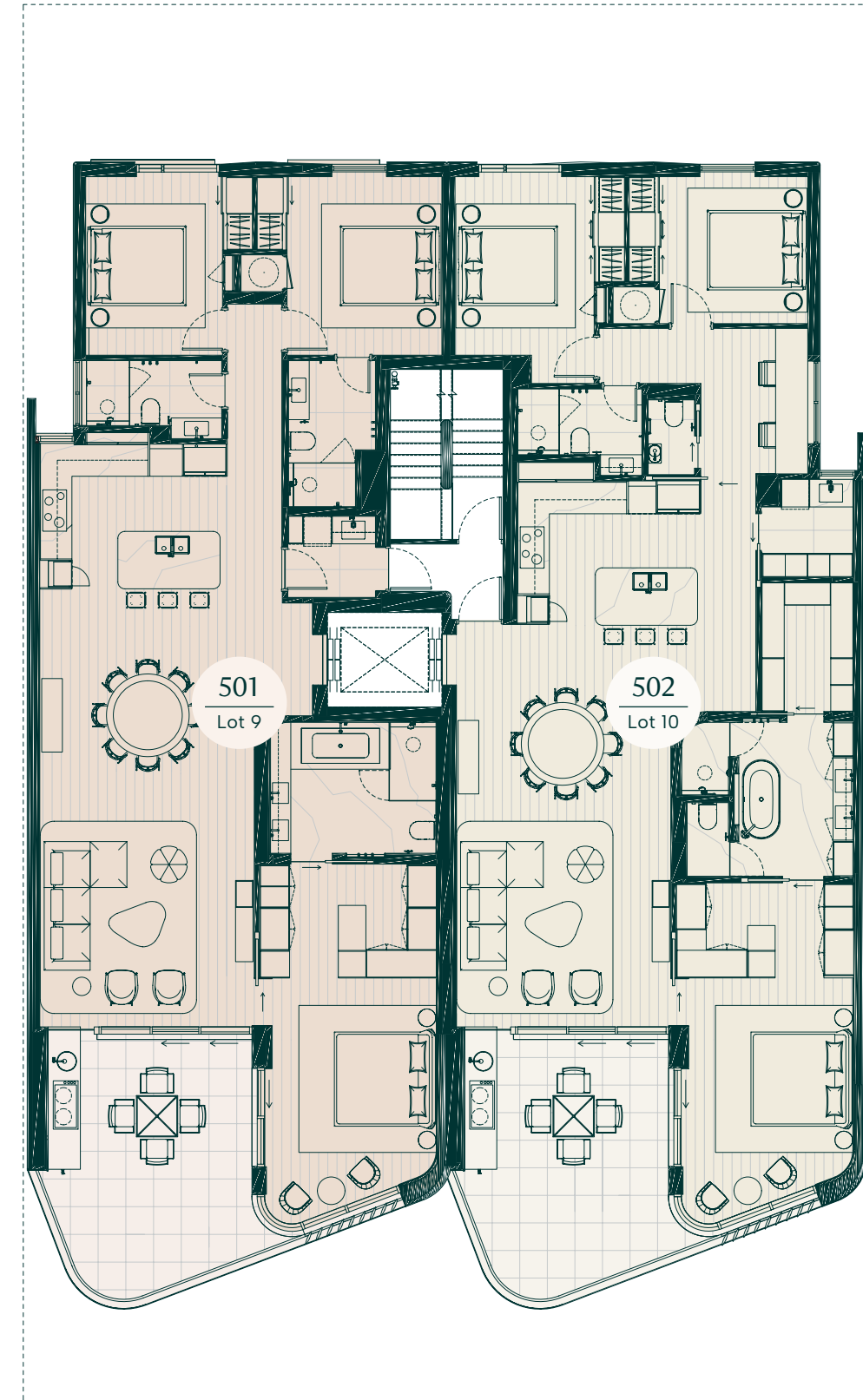
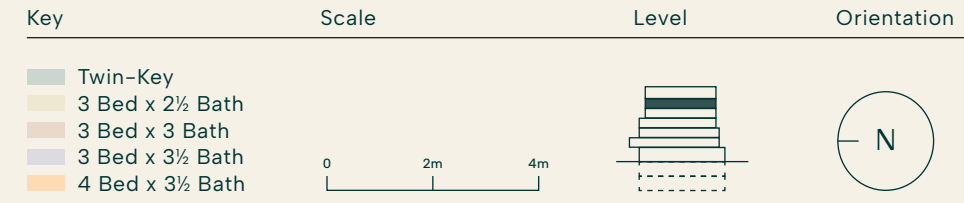
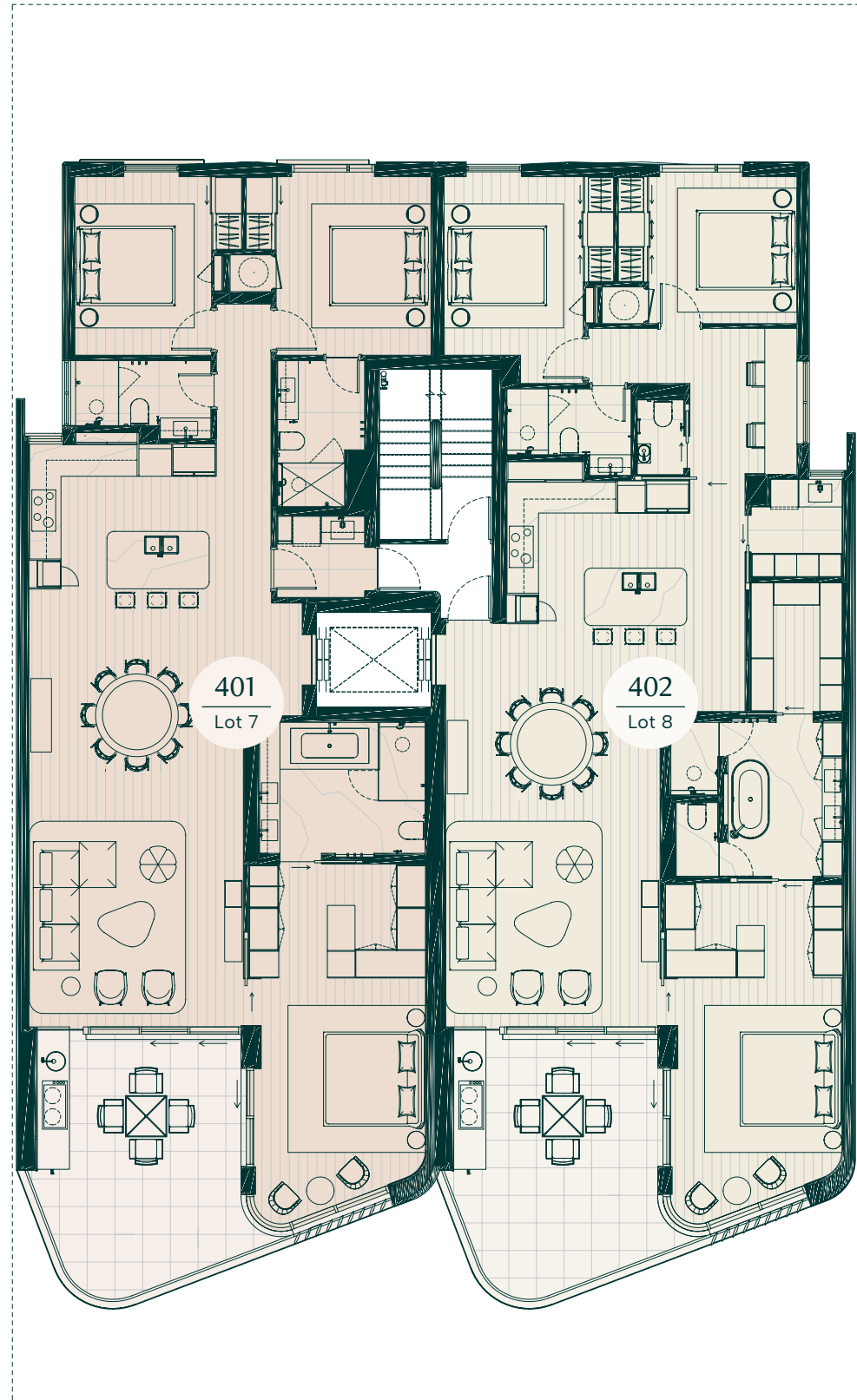
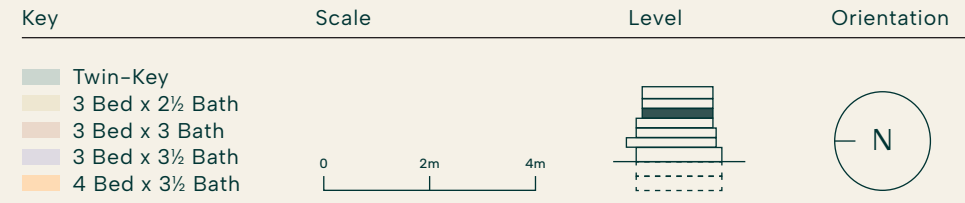
Orientation

N



# Third Floor

# Fourth Floor



# Fifth Floor



# Sixth Floor

Key

Twin-Key

3 Bed x 2½ Bath

3 Bed x 3 Bath

3 Bed x 3½ Bath

4 Bed x 3½ Bath

Scale

0

2m

4m

Level

VI

VII

VIII

IX

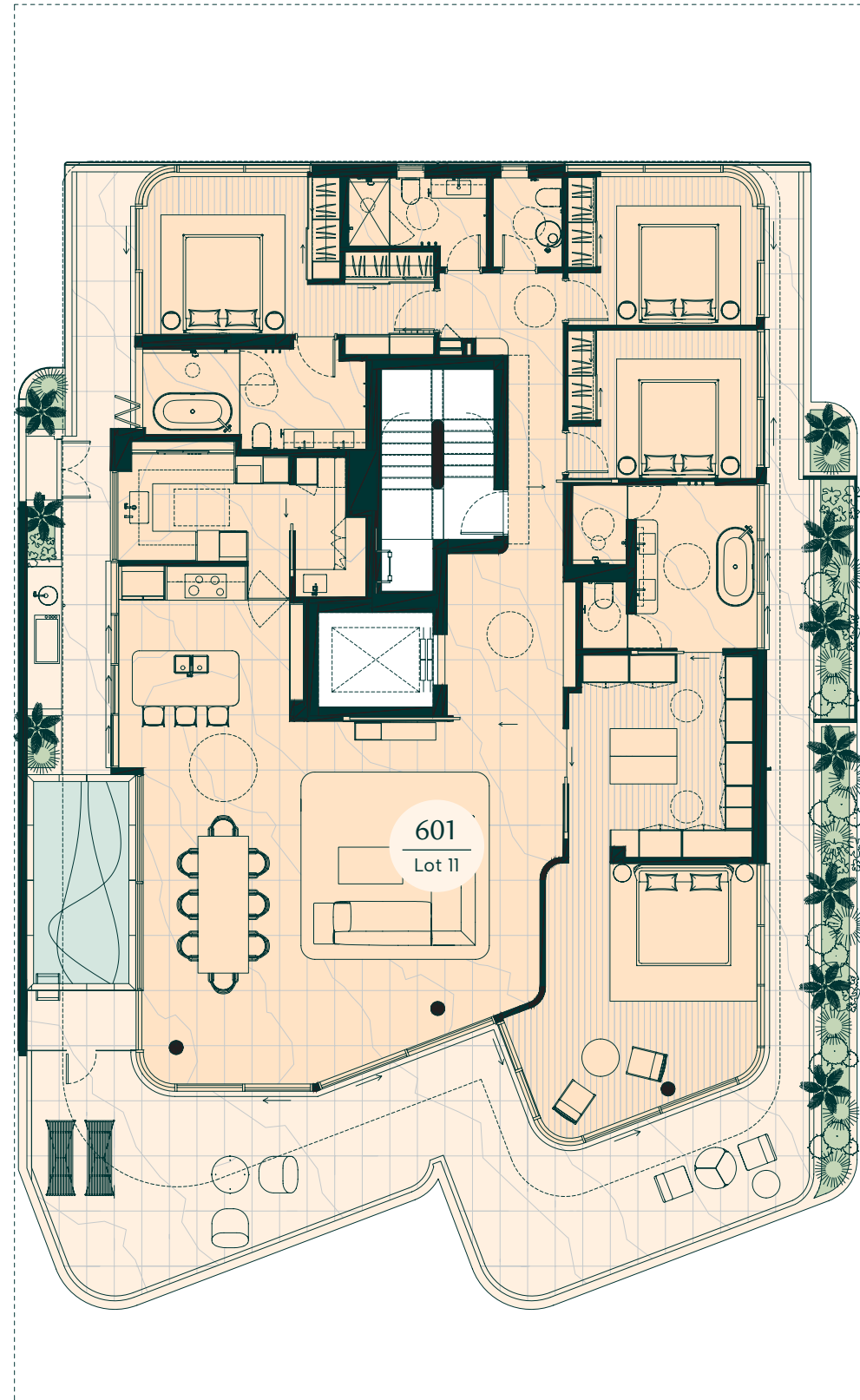
X

XI

XII

Orientation

N



Penthouse  
Walk-in Robe  
Artist's Impression









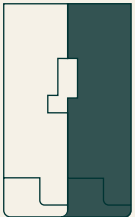
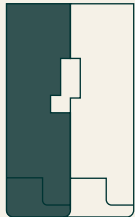
## Residence Plans

Residence 302  
Balcony & Living  
Artist's Impression



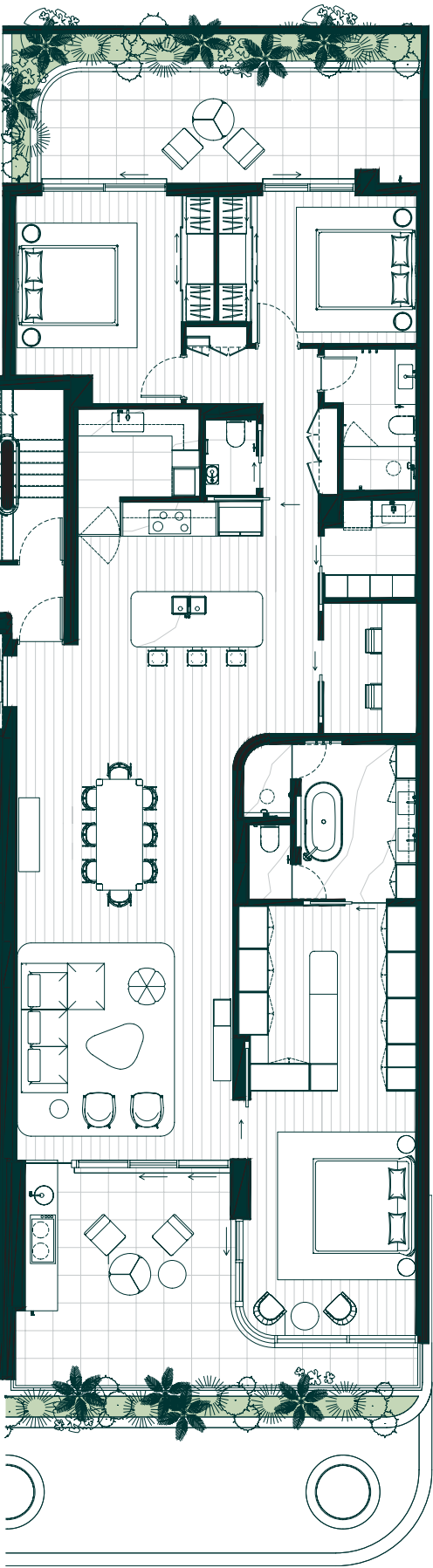
Residence 101

Residence		Details		Areas	
Lot	1	Beds	3	Living	181m <sup>2</sup>
Level	First	Baths	3½	Terrace	58m <sup>2</sup>
		Car Bays	2	Store	5m <sup>2</sup>
				Car Bays	35m <sup>2</sup>
				Total	279m <sup>2</sup>



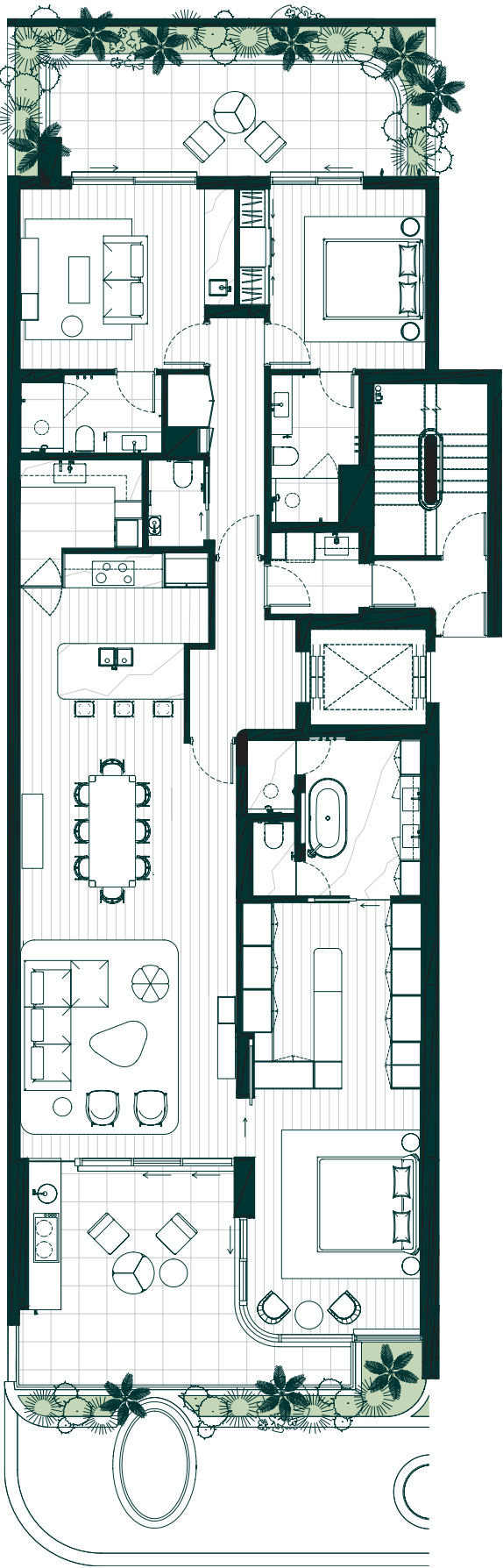
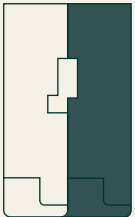
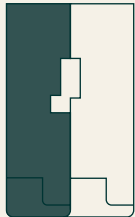
Residence 102

Residence		Details		Areas	
Lot	2	Beds	3	Living	186m <sup>2</sup>
Level	First	Baths	2½	Terrace	60m <sup>2</sup>
		Study	1	Store	5m <sup>2</sup>
		Car Bays	2	Car Bays	30m <sup>2</sup>
				Total	281m <sup>2</sup>



Residence 101

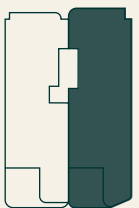
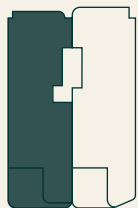
Residence		Details		Areas	
Lot	1	Beds	3	Living	181m <sup>2</sup>
Level	First	Baths	3½	Terrace	58m <sup>2</sup>
		Car Bays	2	Store	5m <sup>2</sup>
				Car Bays	35m <sup>2</sup>
				Total	279m <sup>2</sup>





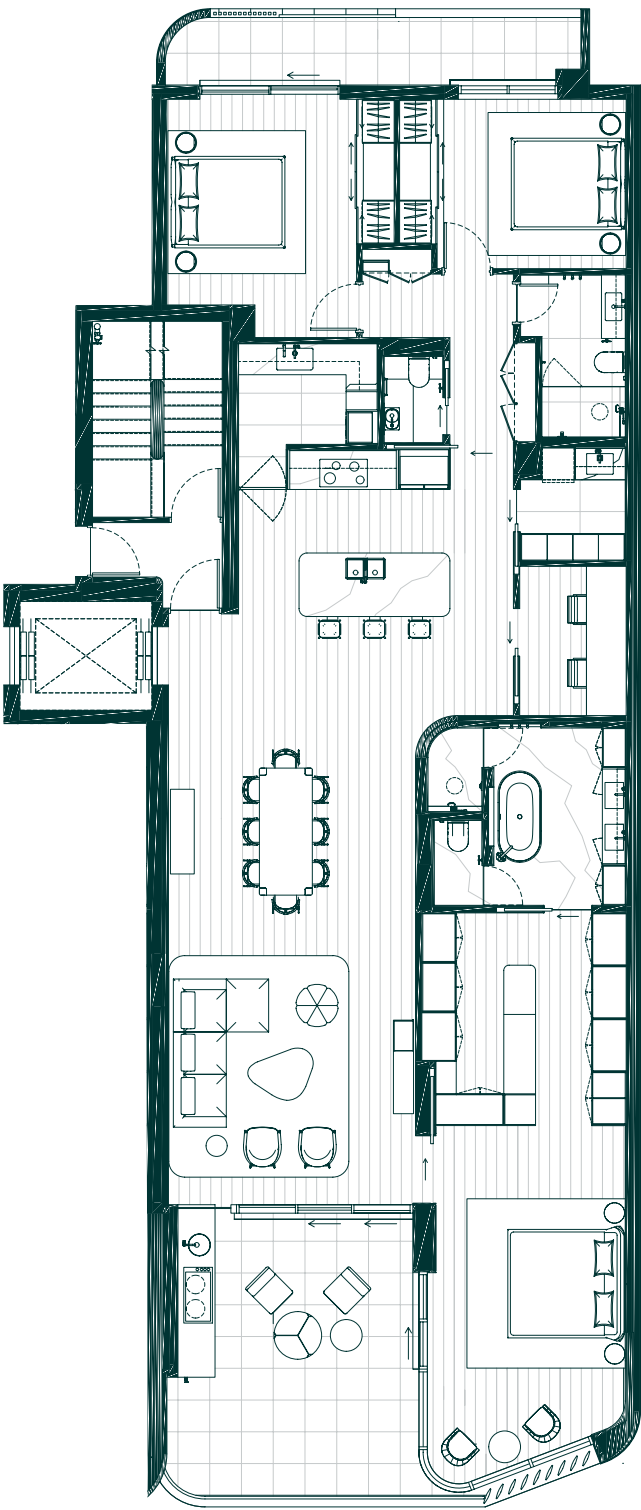
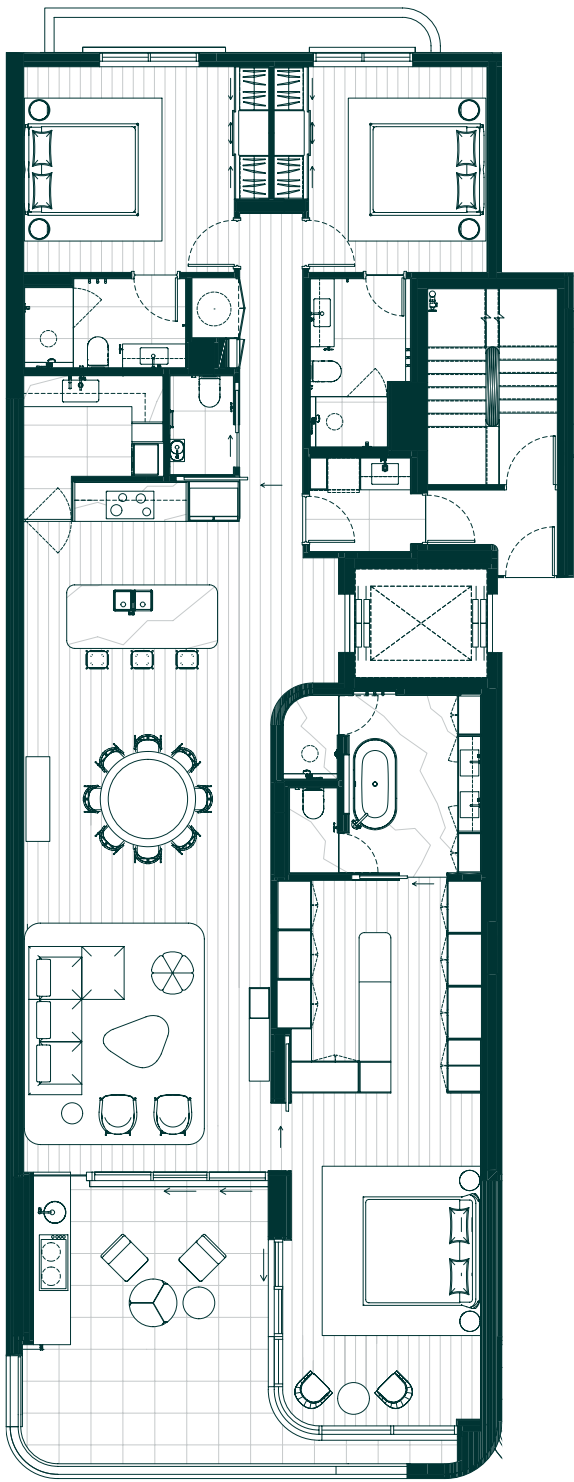
Residence 201

Residence		Details		Areas	
Lot	3	Beds	3	Living	185m <sup>2</sup>
Level	Second	Baths	3½	Terrace	28m <sup>2</sup>
		Car Bays	2	Store	7m <sup>2</sup>
				Car Bays	34m <sup>2</sup>
				Total	254m <sup>2</sup>



Residence 202

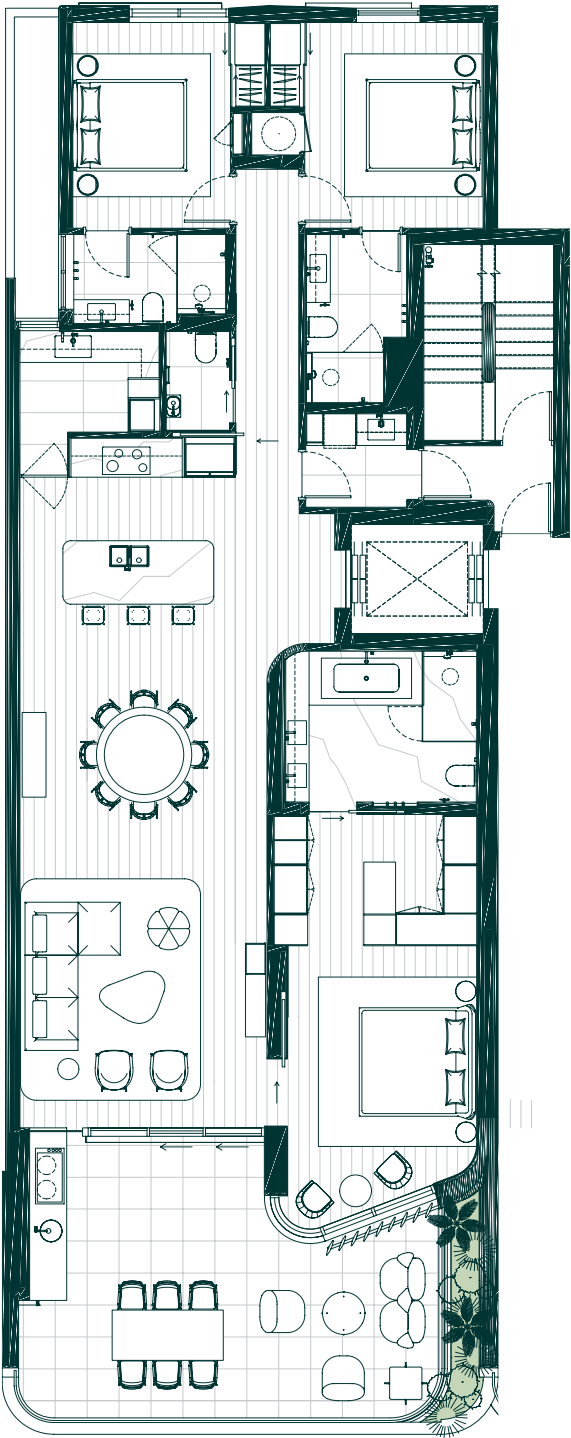
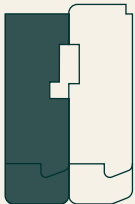
Residence		Details		Areas	
Lot	4	Beds	3	Living	190m <sup>2</sup>
Level	Second	Baths	2½	Terrace	34m <sup>2</sup>
		Study	1	Store	4m <sup>2</sup>
		Car Bays	2	Car Bays	31m <sup>2</sup>
				Total	259m <sup>2</sup>





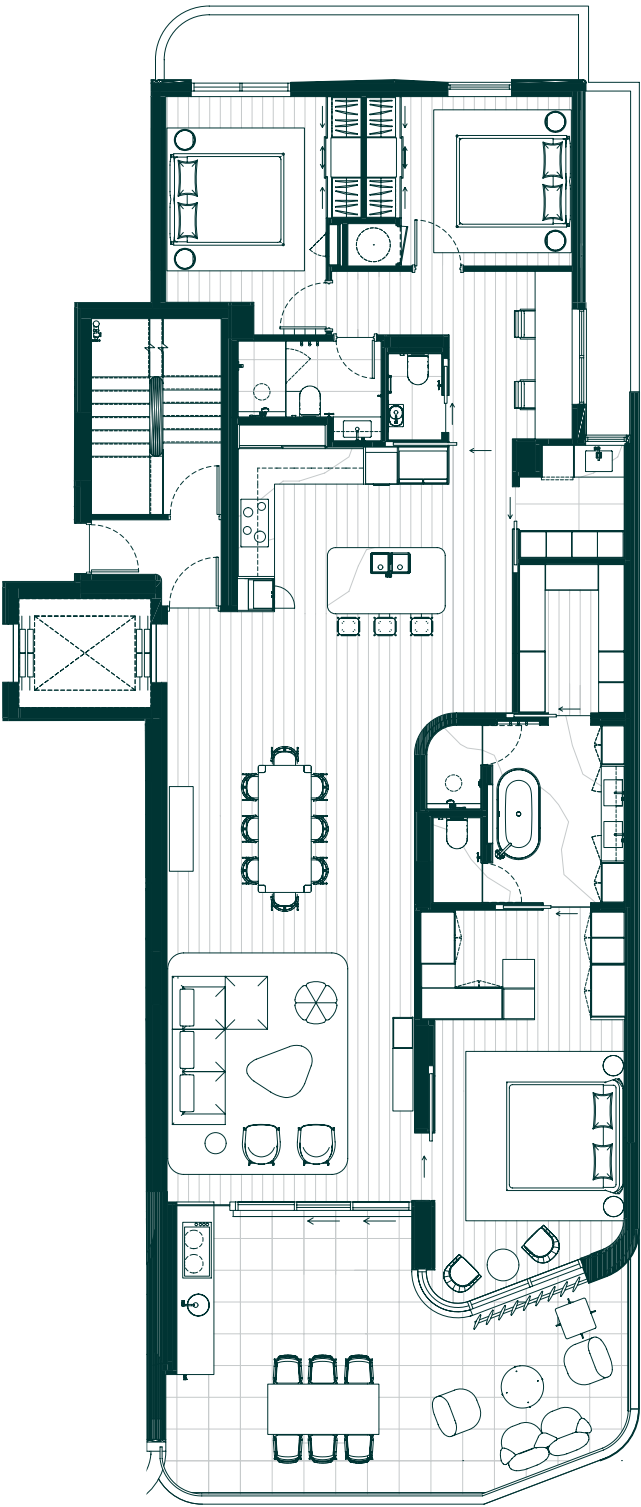
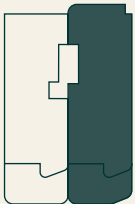
Residence 301

Residence		Details		Areas	
Lot	5	Beds	3	Living	164m <sup>2</sup>
Level	Third	Baths	3½	Terrace	40m <sup>2</sup>
		Car Bays	2	Store	4m <sup>2</sup>
				Car Bays	30m <sup>2</sup>
				Total	238m <sup>2</sup>



Residence 302

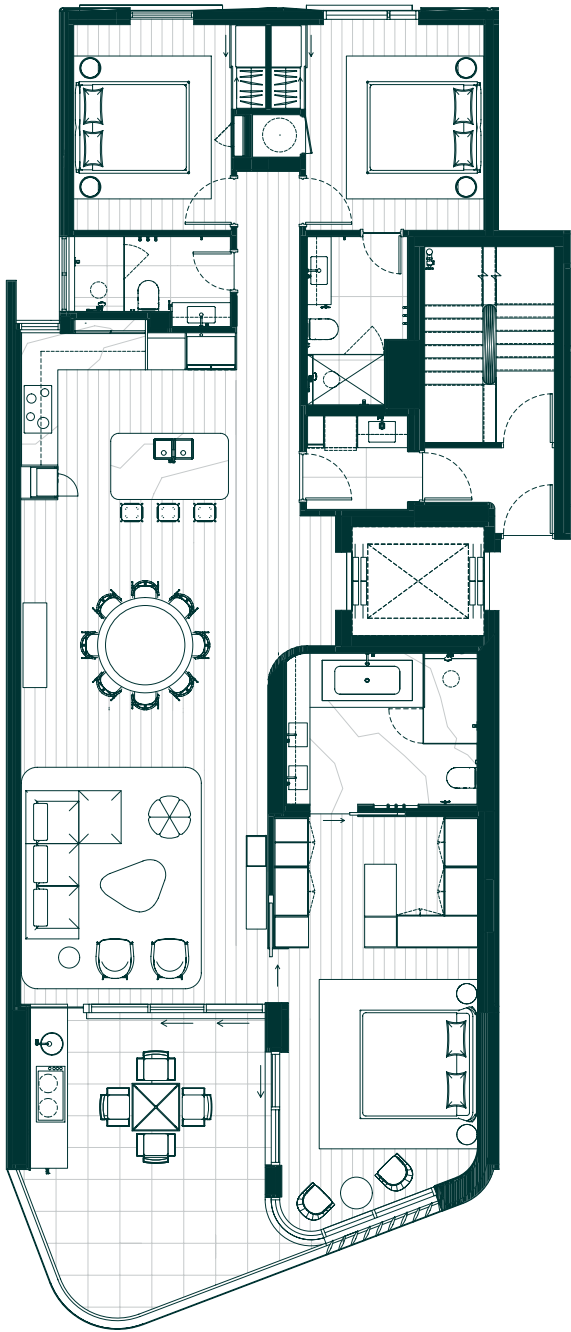
Residence		Details		Areas	
Lot	6	Beds	3	Living	171m <sup>2</sup>
Level	Third	Baths	2½	Terrace	39m <sup>2</sup>
		Study	1	Store	5m <sup>2</sup>
		Car Bays	2	Car Bays	34m <sup>2</sup>
				Total	249m <sup>2</sup>





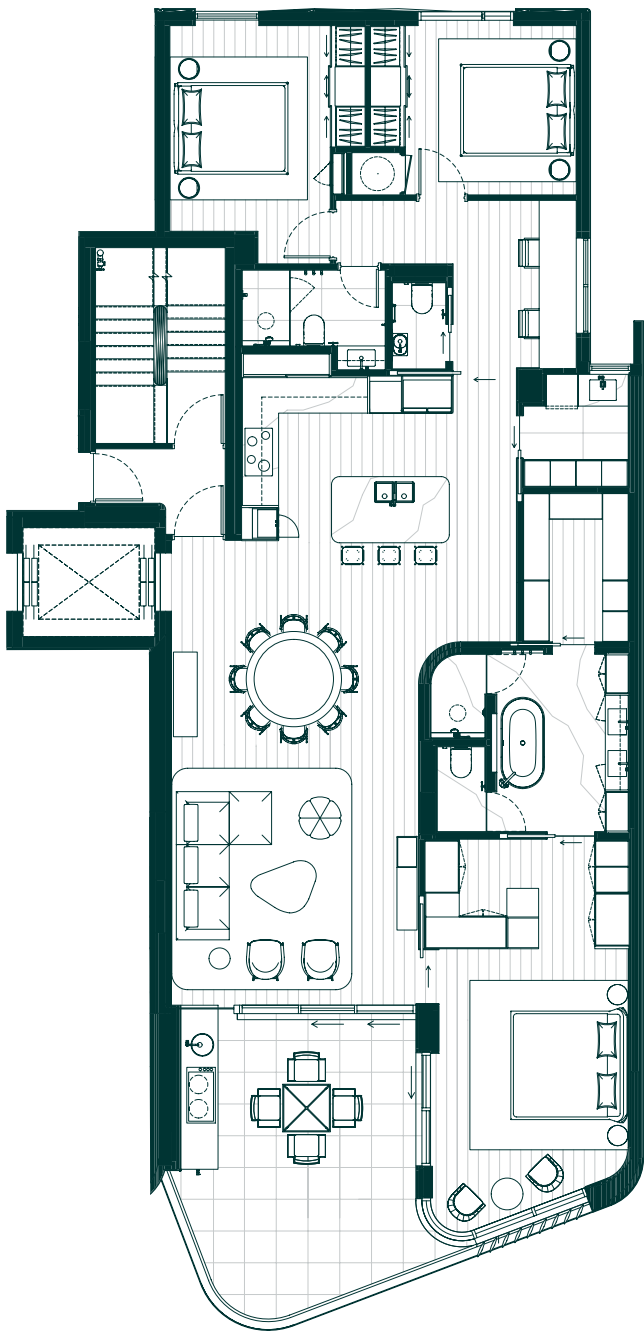
Residence 401

Residence		Details		Areas	
Lot	7	Beds	3	Living	153m <sup>2</sup>
Level	Fourth	Baths	3	Terrace	23m <sup>2</sup>
		Car Bays	2	Store	6m <sup>2</sup>
				Car Bays	30m <sup>2</sup>
				Total	212m <sup>2</sup>



Residence 402

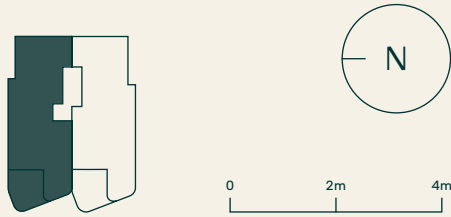
Residence		Details		Areas	
Lot	8	Beds	3	Living	160m <sup>2</sup>
Level	Fourth	Baths	2½	Terrace	23m <sup>2</sup>
		Study	1	Store	5m <sup>2</sup>
		Car Bays	2	Car Bays	31m <sup>2</sup>
				Total	219m <sup>2</sup>





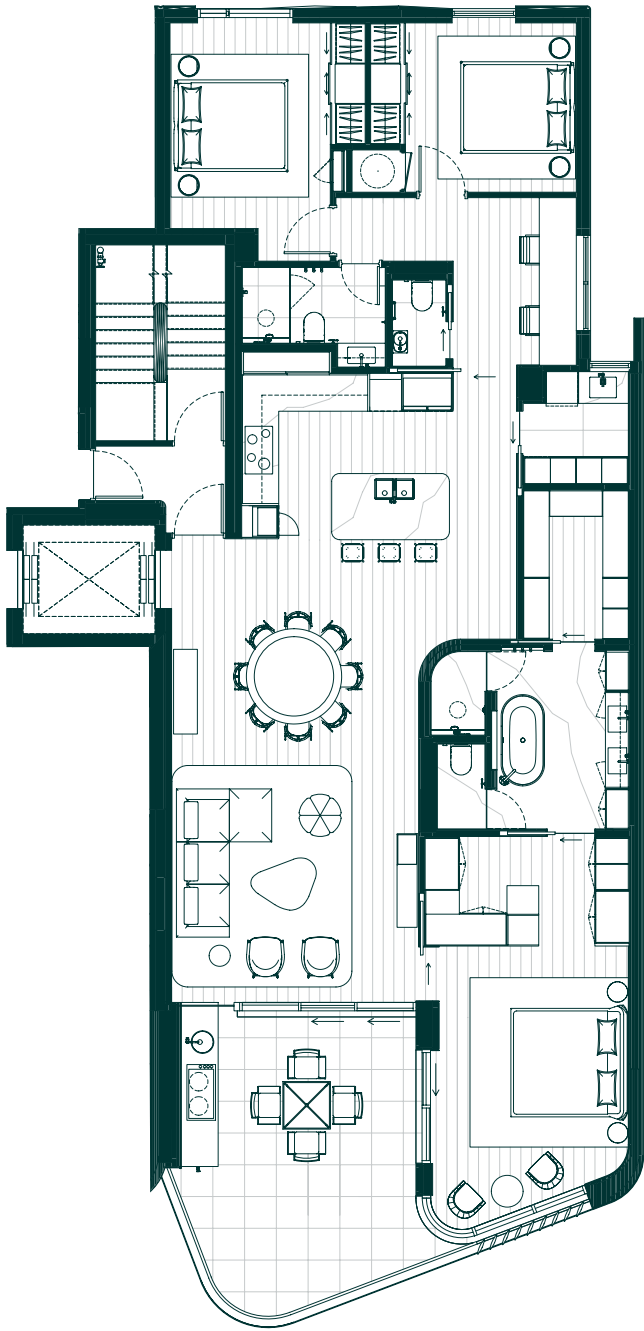
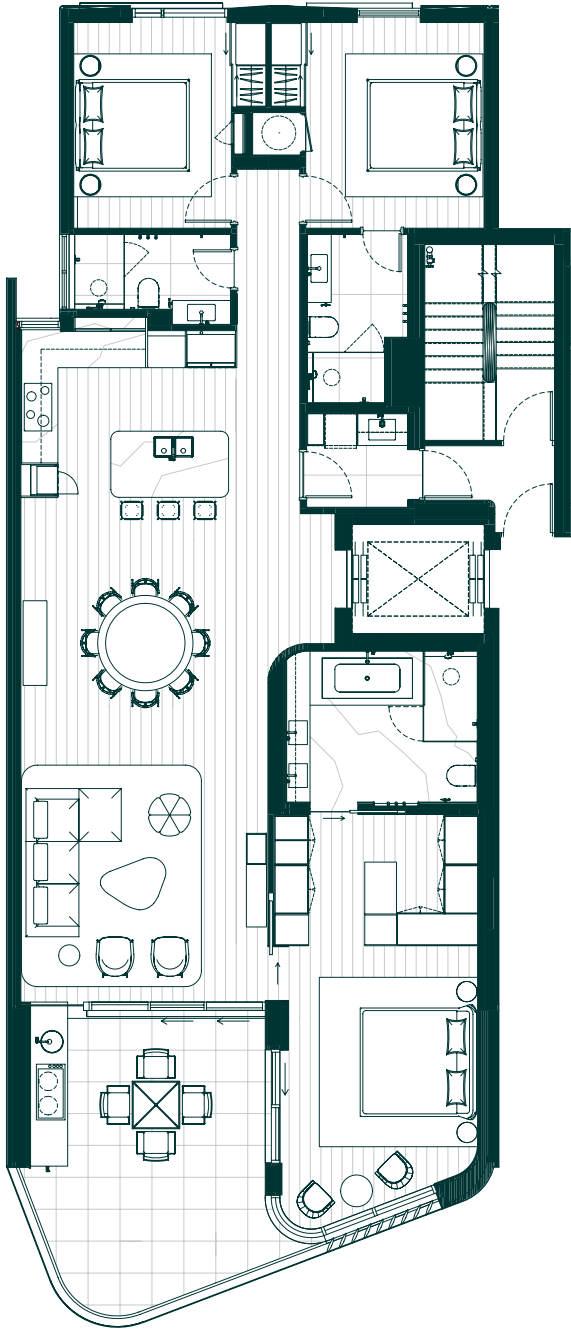
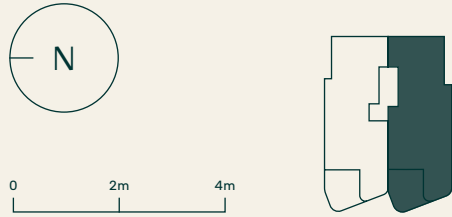
Residence 501

Residence		Details		Areas	
Lot	9	Beds	3	Living	153m <sup>2</sup>
Level	Fifth	Baths	3	Terrace	23m <sup>2</sup>
		Car Bays	2	Store	7m <sup>2</sup>
				Car Bays	29m <sup>2</sup>
				Total	212m <sup>2</sup>



Residence 502

Residence		Details		Areas	
Lot	10	Beds	3	Living	160m <sup>2</sup>
Level	Fifth	Baths	2½	Terrace	23m <sup>2</sup>
		Study	1	Store	16m <sup>2</sup>
		Car Bays	2+1	Car Bays	26m <sup>2</sup>
				Total	225m <sup>2</sup>







Residence 302  
Kitchen  
Artist's Impression

Residence 501  
Living  
Artist's Impression



Sumptuous natural materials, a blend of classic and contemporary aesthetics and meticulous attention to detail converge to create functional spaces with timeless appeal.





Experience the pure pleasure of waking to the sights and sounds of the rolling ocean and watching as the world turns golden at day's end.





## Penthouse Plan

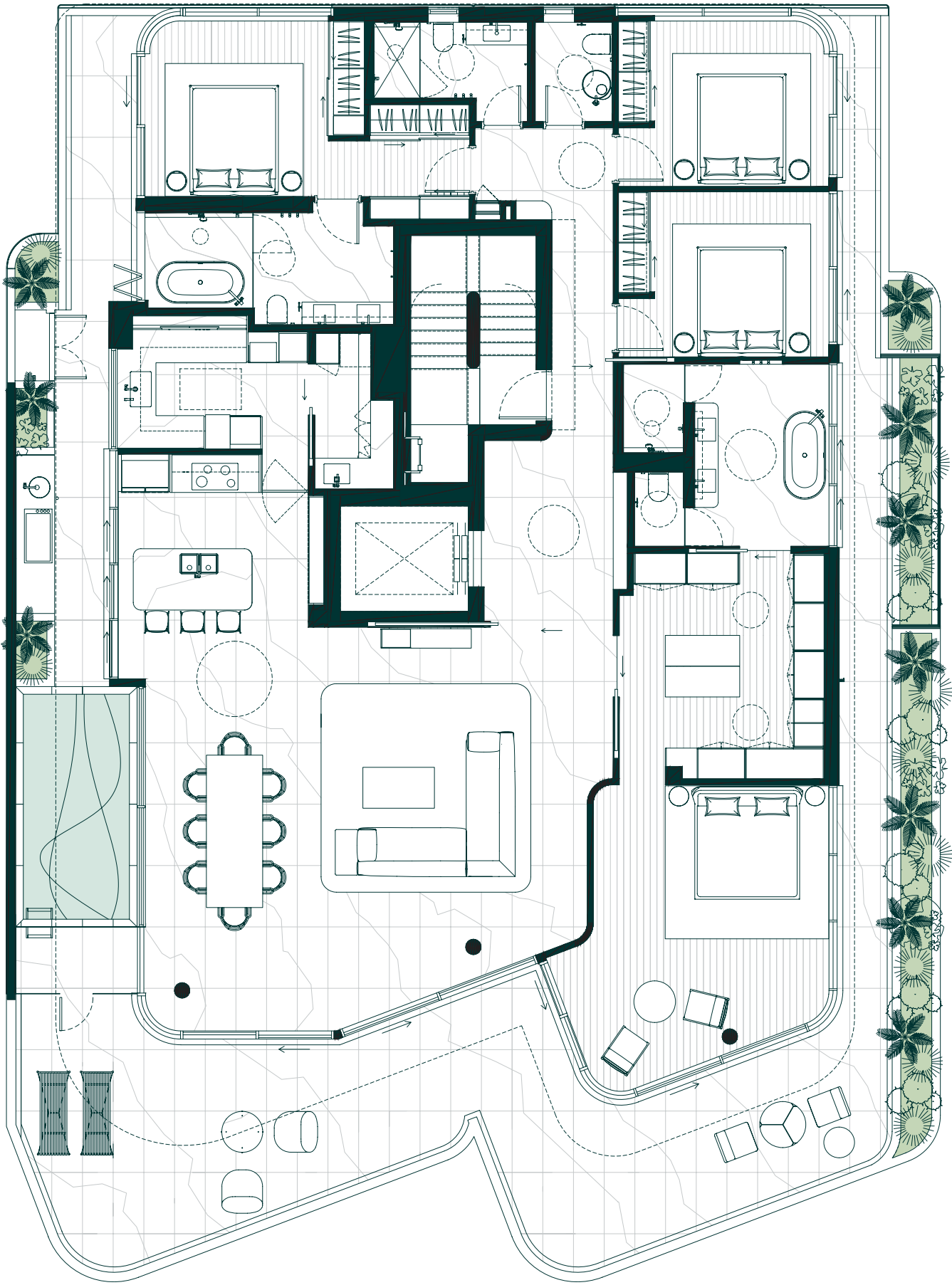
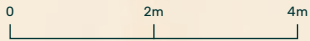
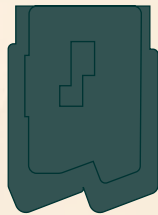
Penthouse  
Kitchen & Living  
Artist's Impression



# Penthouse Plan Residence 601

Representing the epitome of elevated living, each space within the penthouse is filled with natural light and seamlessly integrates with the endless ocean views. The sense of connection to water is further enhanced by the glass viewing panels drawing the eye towards and into the above-ground plunge pool; as the refracted ripples cast across the living spaces, an ever-changing tapestry of patterns plays out.

Residence	
Lot	11
Level	Sixth
Details	
Beds	4
Baths	3½
Car Bays	2+2
Areas	
Living	241m <sup>2</sup>
Terrace	125m <sup>2</sup>
Store	32m <sup>2</sup>
Car Bays	26m <sup>2</sup>
Total	424m <sup>2</sup>







Penthouse  
Master Bedroom & Balcony  
Artist's Impression



## MOMENTS OF QUIET REFLECTION

COTTESLOE

### Disclaimer

Photographs, plans, pictures, and representations (together plans) contained within this brochure in relation to the development known as 'Meridian 120 Marine Pde Cottesloe' are (and are intended to be) indicative only and may not accurately or fully depict the actual or final development at present or in the future. The plans are not, and may not be treated as being, a representation in any respect by the developer, landowner and or any of their respective officers, employees, agents, or advisers (together, developer) or anybody else. The developer may, at any time, amend or replace any plan without notice. The plans are intended to be purely indicative of the general height and general direction of the apartment views. All dimensions and areas are subject to survey. The apartment outlook, existence and location of any landscaping features or other amenities are indicative only and are, in any event, subject to change, at any time. To the maximum extent permitted by law neither the developer nor anybody else: (1) makes any representations or warranties or gives any undertaking, whether express or implied about any matters in these plans, (2) is responsible or liable for the adequacy, accuracy, completeness or reasonableness of any plan, and (3) is responsible or liable for any error or omission in any plan however it arises.





[meridiancottesloe.com](http://meridiancottesloe.com)

**Baltinas**